



SERVICE BULLETIN

Classification: EC09-010	Reference: NTB09-046	Date: June 12, 2009
-----------------------------	-------------------------	------------------------

2004 – 2005 ALTIMA; DTC P0420 WITH SULEV QR25DE ENGINE

- APPLIED VEHICLES:** 2004-2005 Altima (L31)
- APPLIED ENGINE:** **SULEV QR25* Engine Only**
*California emission specification—Super Ultra Low Emission
- APPLIED VIN / DATE:** 2004 Altima: 1N4AL11**4C 100000 to 199929
(Smyrna production) 2005 Altima: 1N4AL11**5C 100003 to 363986
Built on or before April 26, 2005.
- APPLIED VIN / DATE:** 2005 Altima 1N4AL11**5N 400024 to 499961 and,
(Canton production) 1N4AL11**5N 900001 to 905614
Built on or before April 26, 2005.

IF YOU CONFIRM

DTC P0420 is stored in the ECM.

DETERMINE IF:

This bulletin applies by checking the **ECM Part Number**. You will do this by performing steps 1 and 2 in the Service Procedure.

NOTE: If this bulletin does not apply, use ASIST for further diagnostic and repair information.

ACTIONS:

If this bulletin applies:

1. Install the Repair Kit listed in the Parts Information.
 - Repair kit includes exhaust manifold and three way catalyst assembly and the front exhaust tube (under floor catalyst).
2. Reprogram the ECM with CONSULT-II using the ECM I.D. Code.

IMPORTANT: The purpose of "ACTIONS" (above) is to give you a quick idea of the work you will be performing. You **MUST** closely follow the entire Service Procedure as it contains information that is essential to successfully completing this repair.

Nissan Bulletins are intended for use by qualified technicians, not 'do-it-yourselfers'. Qualified technicians are properly trained individuals who have the equipment, tools, safety instruction, and know-how to do a job properly and safely. NOTE: If you believe that a described condition may apply to a particular vehicle, DO NOT assume that it does. See your Nissan dealer to determine if this applies to your vehicle.

PARTS INFORMATION

DESCRIPTION	P/N	QTY
Repair Kit (Exhaust Manifold and Front Exhaust Tube)	A4002 - 9J3MB	1
Repair Kit Contents		
MANIF ASSY-EXH - 14002-9J30B: QTY1		
TUBE ASSY-EXH,FRT - 20020-ZB30A: QTY1		
GSKT-EXH MANIF - 20692-65J00: QTY1		
GSKT-EXH MANIF- 14036-6N200: QTY1		
BRG-SEAL,EXH JT - 20695-8J010 QTY1		
NUT-SPL - 14094-JG30A: QTY 5		

CLAIMS INFORMATION

Submit a Primary Part (PP) type line claim using the following claims coding:

2004 Altima

DESCRIPTION	OP CODE	PFP	SYM	DIA	FRT
Replace Manifold Catalyst, Under Floor Catalyst and Reprogram ECM with IAVL	AX23AA	(1)	HD	32	1.9

(1) Reference the Parts Information table and use the Repair Kit P/N as the PFP.

OR

2005 Altima

DESCRIPTION	OP CODE	PFP	SYM	DIA	FRT
Replace Manifold Catalyst, Under Floor Catalyst and Reprogram ECM	AX24AA	(1)	HD	32	1.8

(1) Reference the Parts Information table and use the Repair Kit P/N as the PFP.

SERVICE PROCEDURE

- Print out the CONSULT-II Self-Diagnosis results.
 - This print out will be used to check the ECM Part Number (determine if this bulletin applies).
 - Figure 1 is an example of the CONSULT-II Self-Diagnosis printout.

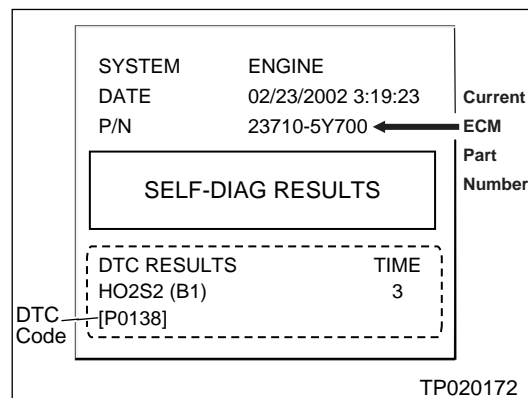


Figure 1

2. Compare the vehicle's current ECM P/N (from your CONSULT-II Self Diagnosis printout) to those shown under **Current ECM P/N** in **Chart A** below.

IMPORTANT: You must use the ECM I.D. Code.



Chart A

Model Year	Vehicle Configuration	Current ECM Part Number: 23710 -	ECM I.D. Code
Altima 2004 SULEV QR25DE	AT	9J34C, 9J34B, 9J34A, 9J321, 9J320	05140901
	AT_ASCD	9J35C, 9J35B, 9J35A, 9J361, 9J360	05140902
	MT	9J36C, 9J36B, 9J36A, 9J366, 9J365	05140903
	MT_ASCD	9J37C, 9J37B, 9J37A, 9J371, 9J370	05140904
Altima 2005 SULEV QR25DE	AT	9J56E, 9J54D, 9J54C, 9J54A, 9J522, 9J521, 9J520	05140905
	AT_ASCD	9J57E, 9J55D, 9J55C, 9J55A, 9J562, 9J561, 9J560	05140906
	MT	9J58C, 9J56C, 9J56B, 9J567, 9J566, 9J565,	05140907
	MT_ASCD	9J59C, 9J57C, 9J57B, 9J572, 9J571, 9J570	05140908

The I.D. code is required to obtain the correct ECM data for resolving the symptom covered by this bulletin.

- A. If the ECM P/N in the vehicle **does not match** one of those listed under "Current ECM P/N" in Chart A:
- This bulletin **does not apply**.
 - Use ASIST for further diagnostic and repair information.
- B. If the ECM P/N in the vehicle **matches** one of those listed under "Current ECM P/N" in Chart A:
- **Proceed** with this Service Procedure on the next page.

3. Install the Repair Kit listed in the Parts Information.

- Repair Kit includes exhaust manifold and three way catalyst assembly and the front exhaust tube (under floor catalyst).
- Refer to the Service Manual as needed for replacement information.
- **Make sure to use the parts listed in the Parts Information of this bulletin.**
- Transfer heat shields and sensors from the old manifold and front tube to the new ones.
- Replace gaskets, seals, and nuts supplied in the Repair Kit.

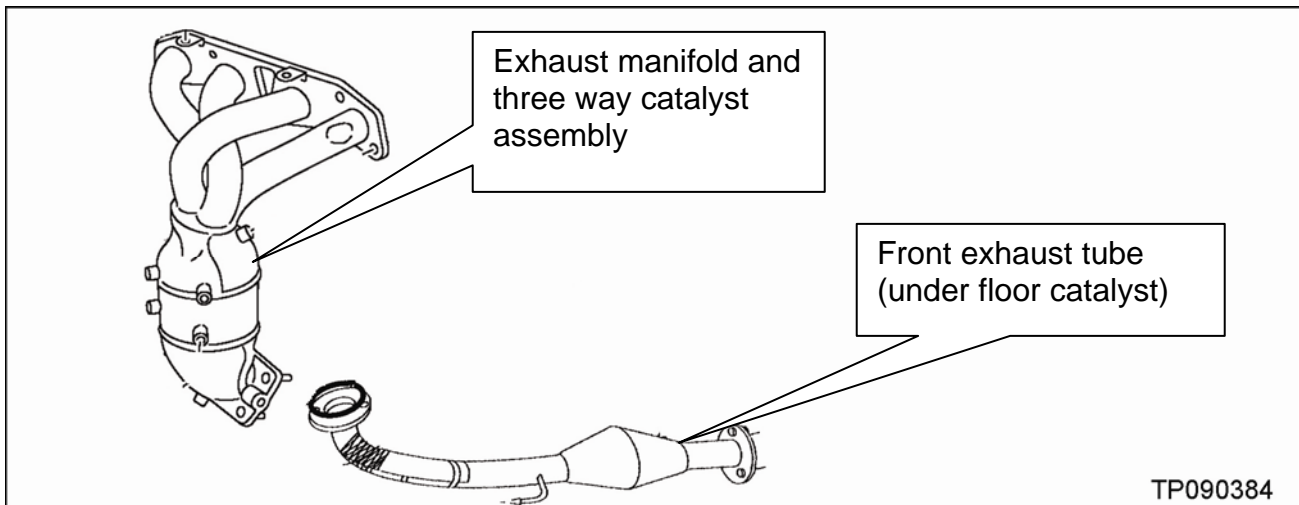


Figure 2

4. Reprogram the ECM.

IMPORTANT NOTES:

- Reprogramming using the ECM I.D. Code is different from the “typical” ECM Reprogramming procedure.
- Make sure to use the **SPECIAL ECM REPROGRAMMING PROCEDURE FOR ECM I.D. ENTRY.**

CAUTION:

- Connect a battery charger to the vehicle battery.
If the 12V battery voltage drops during reprogramming, the ECM may be damaged.
- Make sure CONSULT-II is connected to the A.C power supply.
If the CONSULT-II battery voltage drops during ECM reprogramming, the ECM may be damaged.
- Be sure to turn OFF all vehicle electrical loads.
If a vehicle electrical load remains ON, the ECM may be damaged.

ECU REPROGRAMMING PROCEDURE

There are four basic steps:

Step 1: Download reprogramming data (transfer it) from ASIST into CONSULT-II.

Step 2: “Preparation” steps before reprogramming.

Step 3: Reprogram the vehicle ECM.

Step 4: “Wrap-up” after reprogramming is finished.

- If you are not familiar with ECM I.D. Code reprogramming, click [here](#).

This will link you to the "SPECIAL ECM REPROGRAMMING PROCEDURE FOR ECM I.D. ENTRY" general procedure.

- For those familiar with ECM I.D Code Reprogramming, please review the following steps and use them as a Quick Reference.

Step One: Download (Transfer) Data from ASIST into CONSULT-II

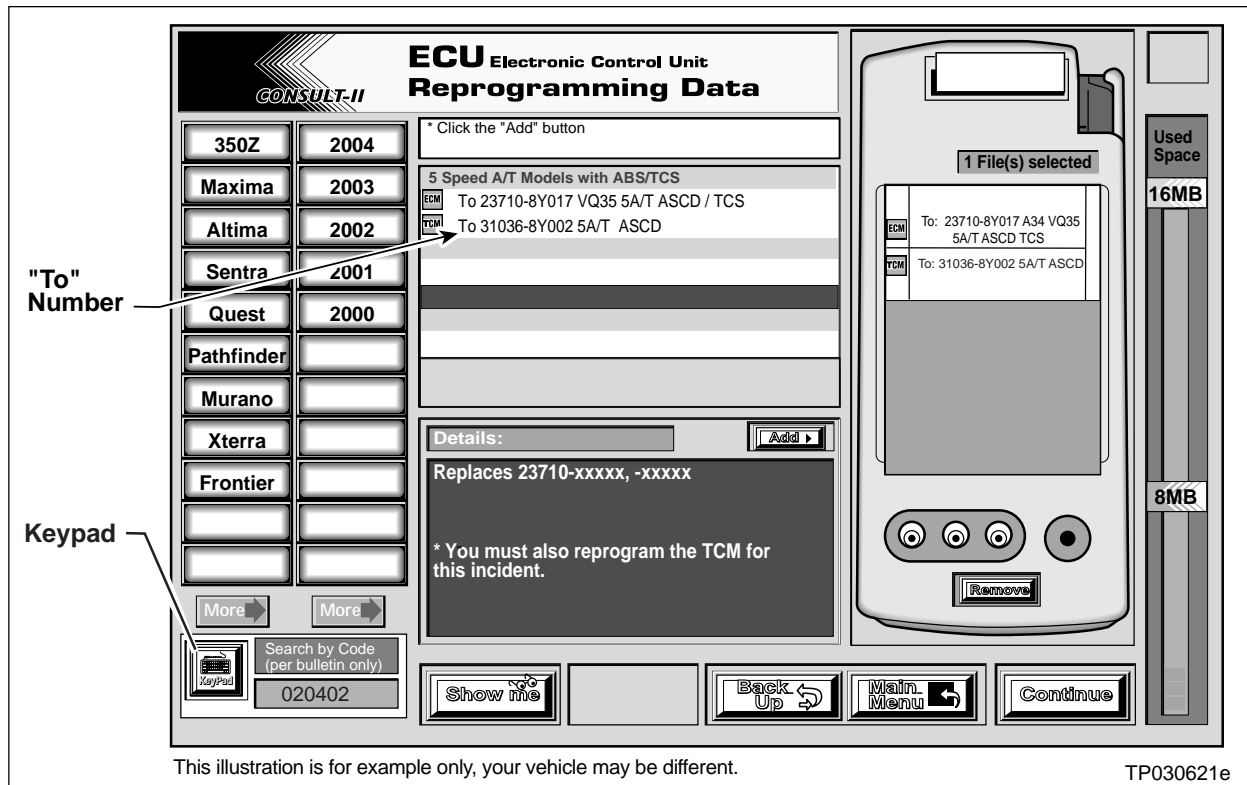


Figure A

1. Click on the Keypad button (see Figure A).
 - A Keypad will pop up, left side of screen.
2. Using the digit keys on the keypad, enter the correct **ECM I.D. CODE** from Chart A on page 3.
3. Click the "Continue" button on the keypad.
4. Add reprogramming data to the "File(s) selected" list. This list is on the right side of the ASIST screen (see Figure A, above).
 - a. Click on the "To" number (it's in the center of the ASIST screen).
 - b. Then click on the "Add" button.
5. Write the "To" number(s) on the Repair Order. You will need this later in the reprogramming process.
6. Click the **"CONTINUE"** button to start the CONSULT-II setup.

Step Two: Preparation for Reprogramming

1. Connect a battery charger to the vehicle's battery.
 - Set the charger to a low charger rate (trickle charge).

CAUTION: For number 2 below and number 3 on the next page, **DO NOT** connect the **CONSULT-II AC** power supply.

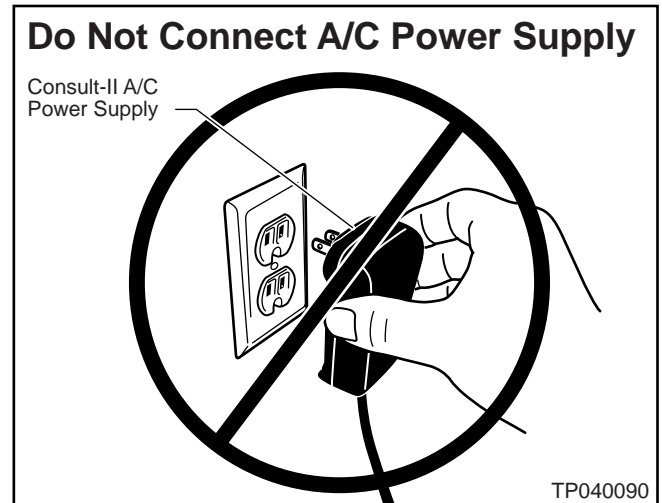


Figure B

2. Press **SUB MODE** (see Figure C) then:
 - a. From the listed items, find and select **BATTERY CHARGE**.

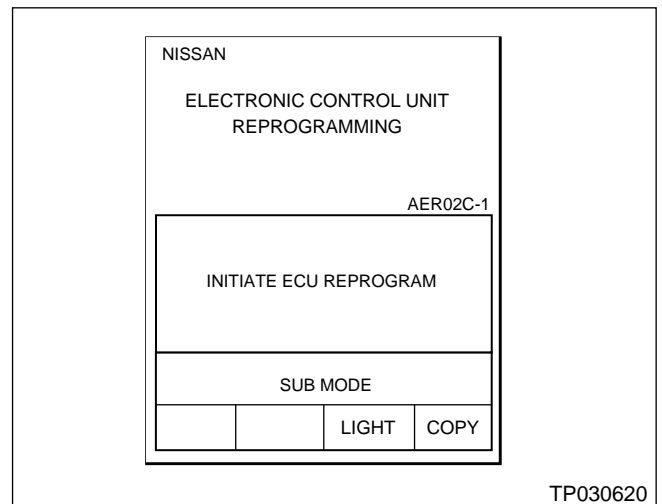


Figure C

3. Check the CONSULT-II's "Charger Input" reading (see Figure D).

NOTE:

- "Battery Voltage" is the voltage level of CONSULT-II's battery.
- "Charger Input" is the voltage level of the vehicle's battery. **(It must be above 12 volts.)**

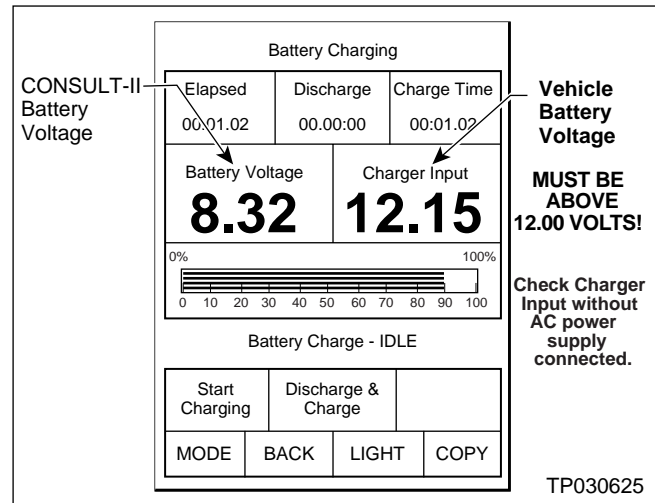


Figure D

CAUTION: If the "Charger Input" is below 12 volts:

- A list of items to check when "Charger Input" voltage is below 12V is contained in the "Special ECM Reprogramming Procedure for ECM ID Entry" general procedure. Click [here](#) to link to it.

Step Three: Reprogram the ECM

- If you are not familiar with ECM Reprogramming, click [here](#):
- This will link you back to a general procedure called "SPECIAL ECM REPROGRAMMING PROCEDURE FOR ECM I.D. ENTRY."

Step Four: ECM Reprogramming “Wrap-up”

1. Turn the ignition switch "OFF" and CONSULT-II “OFF”.
2. Wait more than 10 seconds, then;
 - a. Turn the ignition switch "ON" for 2 second, then
 - b. Turn the ignition switch "OFF" again for 10 seconds (see Figure D).
 - This will reset ECM “self learned” Data.

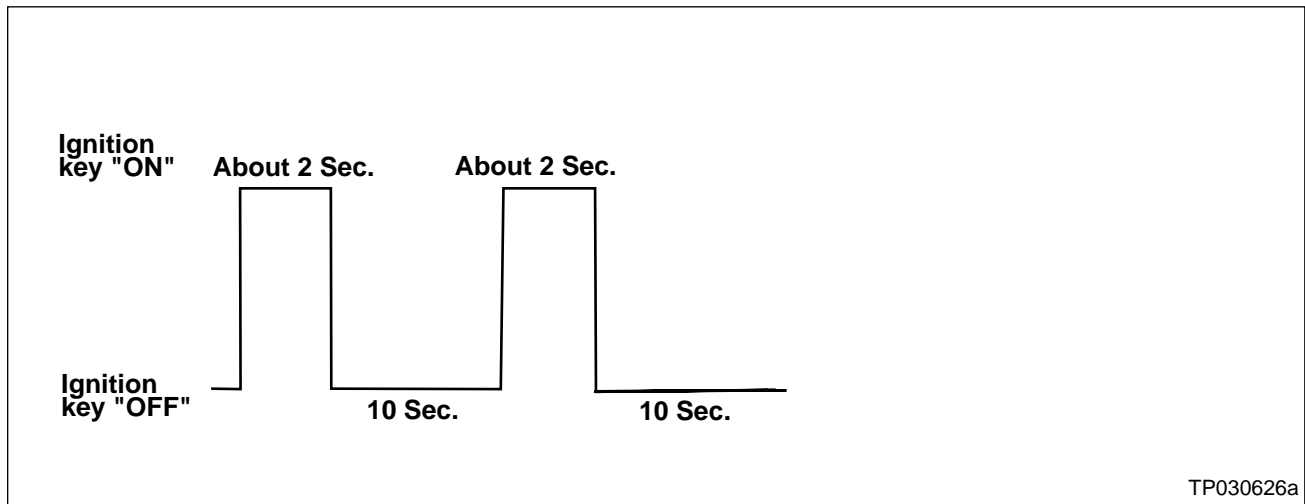


Figure E

3. Idle Air Volume Learning (IAVL) Procedure:
 - **For 2004 Models:** Perform the IAVL Procedure (refer to the Service Manual for details).
 - **For 2005 models:** IAVL is not needed.
4. Confirm the engine is operating normally.
5. Make sure the MIL is OFF.
 - If it's still ON, use CONSULT-II with the Diagnostic (red/white) Card to erase any DTCs that may have stored during the reprogramming procedure.